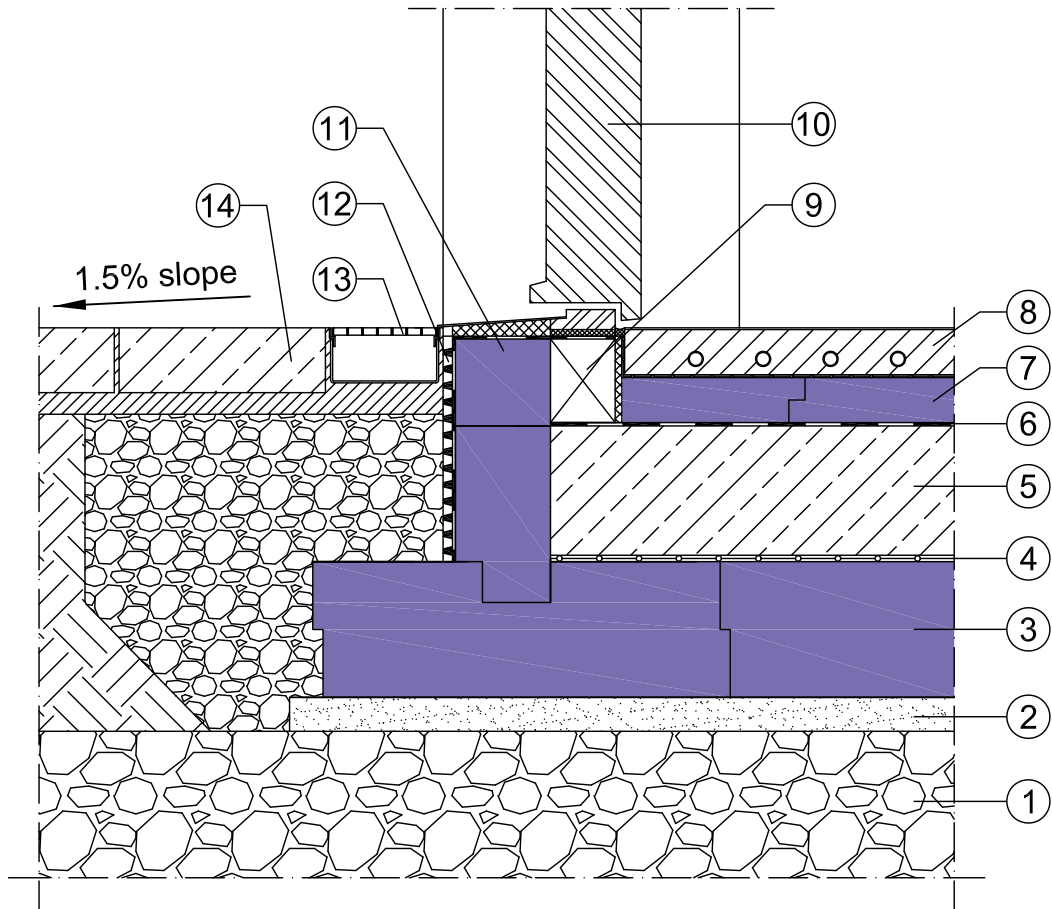



## JACKODUR® Atlas - external door threshold



- |  |  |
|--|--|
| ① crushed stone layer                  | ⑨ Sole plate   |
| ② Levelling layer e.g. grit sand       | ⑩ External door  |
| ③ JACKODUR® Atlas                      | ⑪ JACKODUR® KF 300 Gefiniert                                   |
| ④ PE sheet                             | ⑫ Cement based waterproof coating inc. impact protection layer |
| ⑤ Foundation slab                      | ⑬ Drainage channel   |
| ⑥ Waterproofing                        | ⑭ Concrete paving slab   |
| ⑦ e.g. JACKODUR® Plus 300 Standard     |  |
| ⑧ Screed with underfloor heating pipes |  |

System	Perimeter	<p>Note: The information in this drawing represents our current state of knowledge and experience. They do not represent any guarantee in the legal sense of the term. When using these products, the specific conditions relative to the particular application must always be taken into account, especially with regard to structural physics, civil engineering and statutory building regulations.</p>	 <a href="http://www.jackon-insulation.com">www.jackon-insulation.com</a>
Date	06/2019		
Detail	01-026		