

JACKODUR® Cavity tray insulation

The secure base insulation for faced brickwork.

Made of extruded polystyrene foam (XPS), JACKODUR® Cavity tray insulation is specially designed for insulating the lower area of cavity walls. The beveled surface reliably channels away any moisture from the formwork cavity. The tongue-and-groove joint provides insulation without thermal bridges.

Benefits

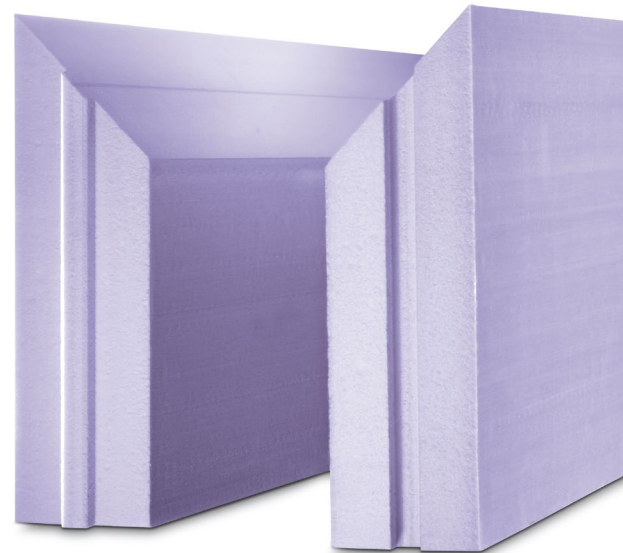
- Beveled surface for the masonry barrier
- Fast and economical handling
- Stable and water-repellent
- Tongue-and-groove profile

Technical data:

- Thicknesses: 80, 100, 120, 140, 160, 180, 200 mm
- Heights: 250 / 350 mm
- Length: 1250 mm
- Rated value of thermal conductivity 0.035 W/(m·K)



Available with
 $\lambda_D = 0.027 \text{ W/(m}\cdot\text{K)}$
on request!



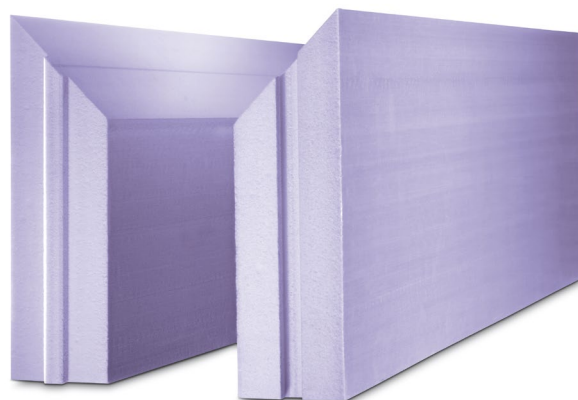
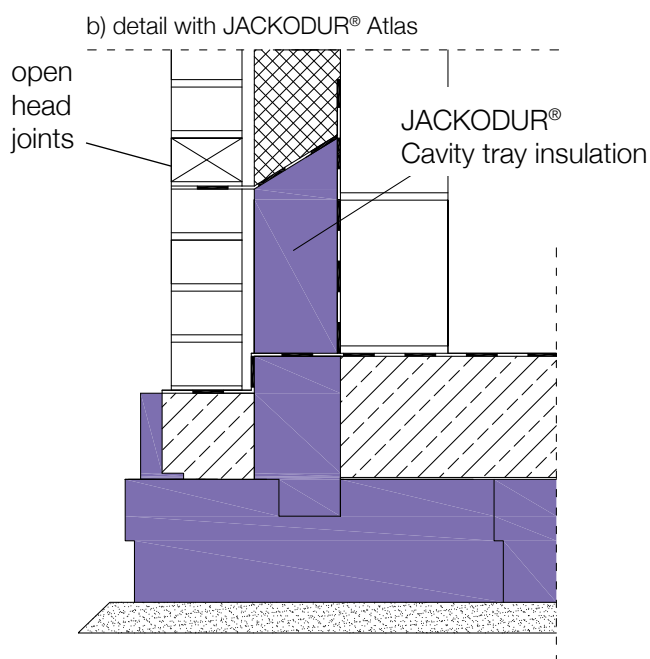
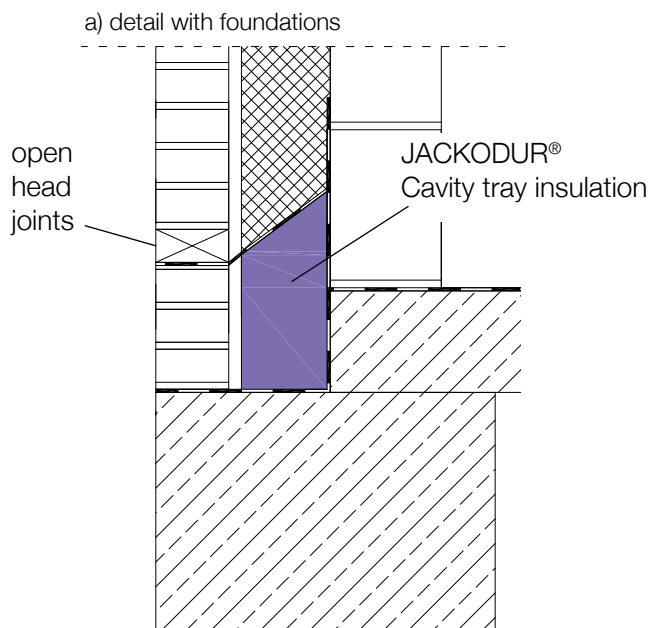
JACKODUR® Cavity tray insulation

JACKODUR® Cavity tray insulation has good compressive strength and is dimensionally stable, impervious to moisture and rot-resistant.

JACKODUR® Cavity tray insulation is made of tried-and-tested JACKODUR® extruded polystyrene foam.

This closed-cell material provides extremely efficient thermal insulation and neither absorbs water nor transports it via capillary action. As base insulation in cavity walls, JACKODUR® Cavity tray insulation not only performs the insulating function but also provides a precisely fitting masonry barrier substrate to drain away moisture. That means the product complies with the masonry standard:

“In the area of the cavity, the seal must be installed sloping outward; in the area of the outer shell, it must be installed horizontally.”
(per DIN 1053-1, Section 8.4.3.1)



Find important information for your planning at www.jackon.co.uk